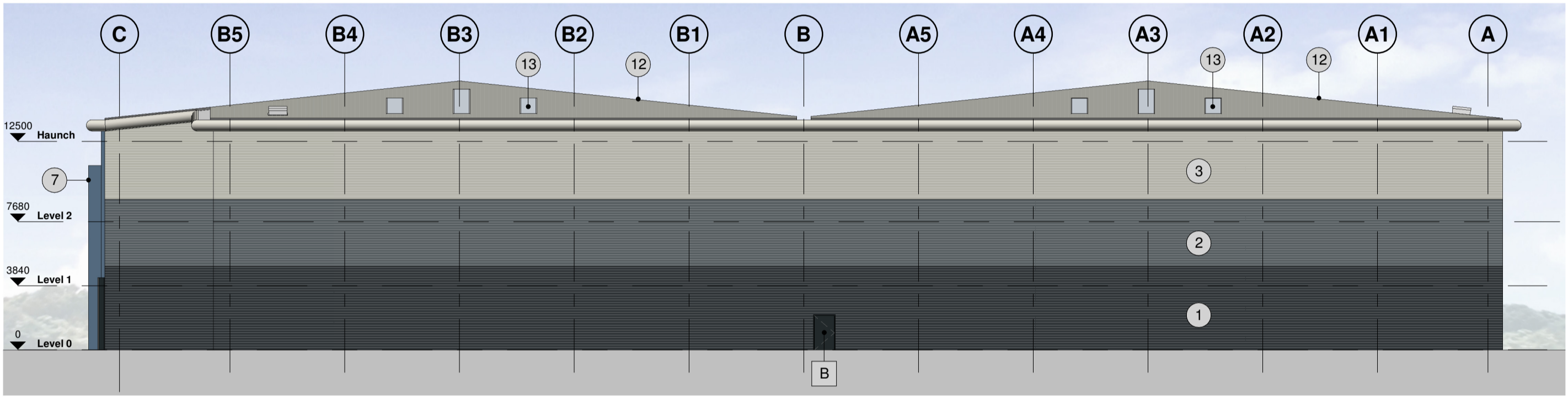
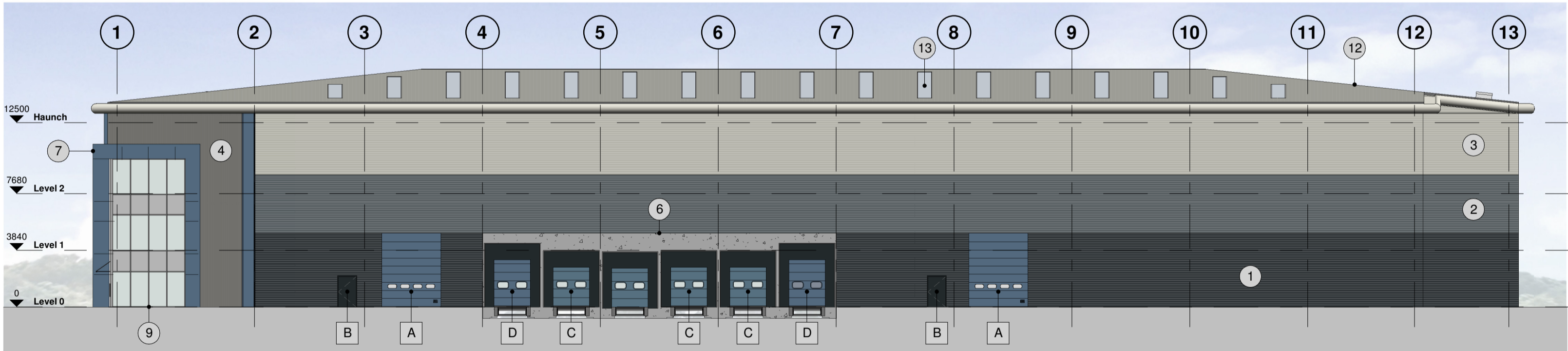


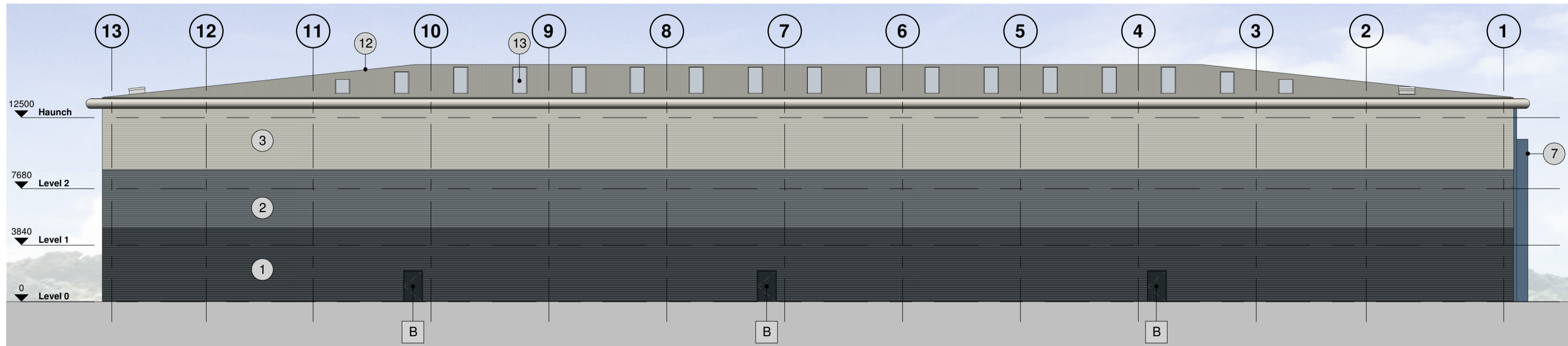
**Unit 1 - Proposed Elevation A**  
1 : 250



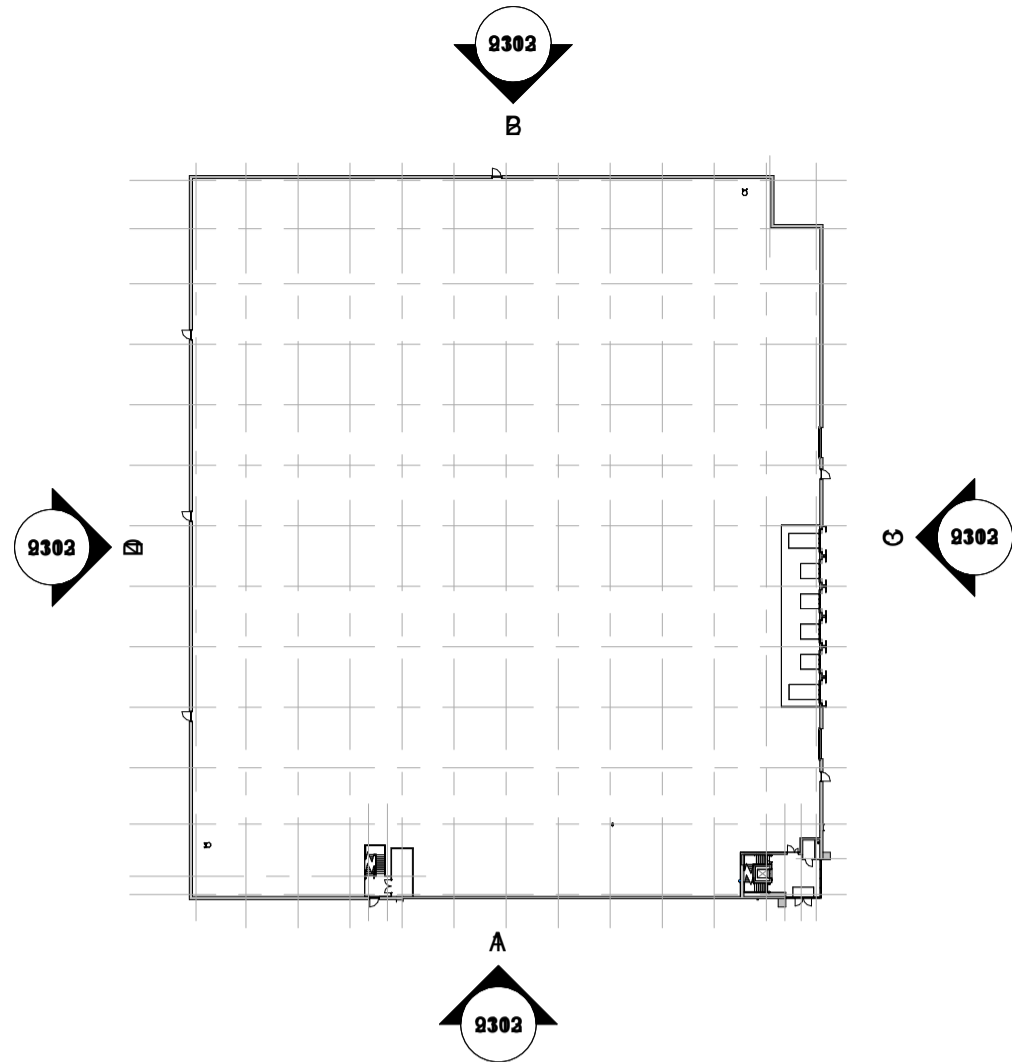
**Unit 1 - Proposed Elevation B**  
1 : 250



**Unit 1 - Proposed Elevation C**  
1 : 250



**Unit 1 - Proposed Elevation D**  
1 : 250



**21-00 Elevations Key**  
1 : 1000

### Building Fabric Materials Schedule

- Wall Type 1 - Built-up metal cladding (twin skinned, insulated)  
Horizontally Laid Half Round profile - Anthracite (RAL 7016)
- Wall Type 2 - Built-up metal cladding (twin skinned, insulated)  
Horizontally Laid Half Round profile - Merlin (BS 18B25) or  
Pure Grey (RAL 000 55 00).
- Wall Type 3 - Built-up metal cladding (twin skinned, insulated)  
Horizontally Laid Half Round profile - Hamlet (RAL 9002)
- Wall Type 4 - Built-up metal cladding (twin skinned, insulated)  
Vertically Laid Trapezoidal profile - Metallic Orion (RAL 9007)
- Wall Type 5 - Metal faced composite (sandwich) panel  
cladding system, micro-rib / satin-line profile -  
Metallic - Sirius (RAL 9006).
- Wall Type 6 - Precast concrete (Insulated Infills) to Loading  
Docks Specialist panels  
Natural colour / finish
- Wall Type 7 - Feature Portico Surround - Aluminium  
Rainscreen folded panels to approved detail on support  
carrier system - PPC Denim (RAL 5014).
- Wall Type 8 - Feature Vertical Recess - Aluminium Sheeting  
with splayed profile edges to approved detail on support  
carrier system - PPC Denim (RAL 5014).
- Wall Type 9 - Aluminium Curtain Wall stick frame system  
PPC Anthracite (RAL 7016) framing, double glazed infills  
(solar control) - Integral glazed entrance doorset.
- Strip Glazing - Window or Curtain Wall frame section, PPC  
metallic finish, Sirius (RAL 9006) to match cladding -  
complete with double glazed infill units (solar control)
- Feature Eaves Banding - stepped profile eaves with integral  
bullnose gutter arrangement - PPC Aluminium - Hamlet (RAL  
9002).
- Roof Type 1 - Metal faced composite (sandwich) interlocking  
cladding panel system, trapezoidal profile - Merlin Grey (BS  
18B25) or GWG (BS 10A05) with 15% in-plane rooflights.
- Roof Type 2 - In-plane rooflights integral to compositing  
system
- Operational Door - Level Access (4m x 5m high)  
Sectional insulated shutter, plastisol coated finish, Denim  
(RAL 5014).
- Personnel Access / Escape doorset  
Galvanised steel, PPC finish matched to cladding location,  
anti-vandal ironmongery.
- Operational Door - Dock Levellers Standard Bay  
(2.86m x 3.0m high)  
Sectional insulated shutter, plastisol coated finish, Denim  
(RAL 5014) c/w shelter curtains PVC black.
- Operational Door - Dock Levellers Double Deck Bay  
(2.86m x 3.6m high)  
Sectional insulated shutter, plastisol coated finish, Denim  
(RAL 5014) c/w shelter curtains PVC black.

0m 5m 10m 15m 20m  
VISUAL SCALE 1:250 @ A1

### Drawing Status CONSTRUCTION

This drawing is © C4 Projects and is not to be copied, reproduced or re-distributed either in whole or in part without the prior written permission of the originator.

The originator shall have no responsibility for any liability, loss, cost, damage or expense arising from or relating to any use of this document other than for its intended purposes on this project.

This drawing shall be read in conjunction with all other relevant drawings, specifications and associated documentation. Any discrepancies, errors or omissions are to be reported to the originator before proceeding with work.

All dimensions are to be checked on site by the contractor prior to proceeding with any work. This drawing shall not be scaled to ascertain any dimensions, work to figured dimensions only.

**DISCLAIMER**  
When this drawing is issued in CAD, it is an uncontrolled version issued for information only, to enable the recipient to prepare their own documents/ drawings for which they are solely responsible.

**SOFTWARE INTEROPERABILITY**  
C4 Projects prepared this drawing using Autodesk® REVIT® Architecture.  
C4 Projects does not accept liability for any loss or degradation of any information held in the drawing resulting from the translation from the original file format to any other file format or from the recipients reading of it in any other programme.

Hazard Identification		
ref	hazard	date

### CONSTRUCTION NOTES

Development proposals are to be read in conjunction with all referenced drawings and documents.

This drawing has been prepared for information and design intent purposes, Refer also to the relevant subcontractors detailed information

C03	Client Issue	AH	23.04.24	JC
C02	Louvers added to Elevation	AH	22.03.24	JC
C01	Updated to Construction Status	AH	05.01.24	JC
P6	Preliminary Construction Issue	BP	08.12.23	JC
P5	Coordination Update	AC	11.10.23	JC
P4	Tender Issue Update	LG	26.10.22	BC
P3	Tender Issue Update	BB	23.09.22	BC
P2	Tender Issue Update	BB	21.09.22	BC
P1	Tender Issued	BB	05.08.22	BC
Rev	Revision Details	Drawn	Date	Checked

**C4 Projects**  
Quayside,  
Widnespool Business Park,  
Stockton Heath,  
W44 6HL,  
t: 01925 751 852  
e: info@c4projects.co.uk  
www.c4projects.co.uk

Project Management • Architecture • Building Surveying • Cost Consultancy

Client  
BCL (Maple Cross) LLP

Project  
Land at Maple Lodge Close,  
Maple Cross, Rickmansworth

Drawing Title  
Unit 1 - GA Elevations as Proposed

Status Purpose of Issue

**A APPROVED**

Drawn by BB Created July 2022

C4 Job no. 17019 Scale As indicated @ A1

Drg no.	Rev
17019-C4P-U1-ZZ-DR-A-2112	C03